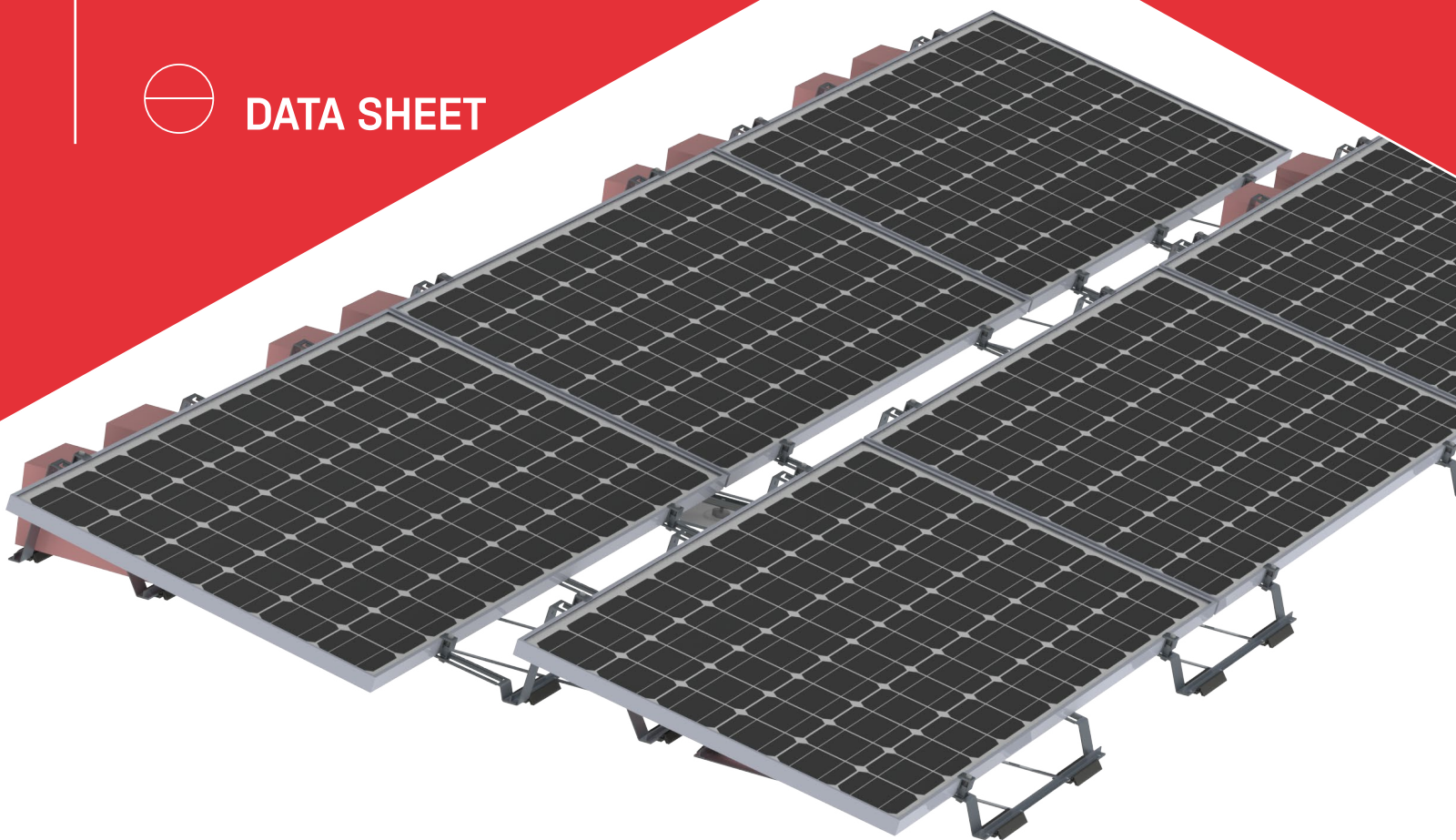


The South Face System



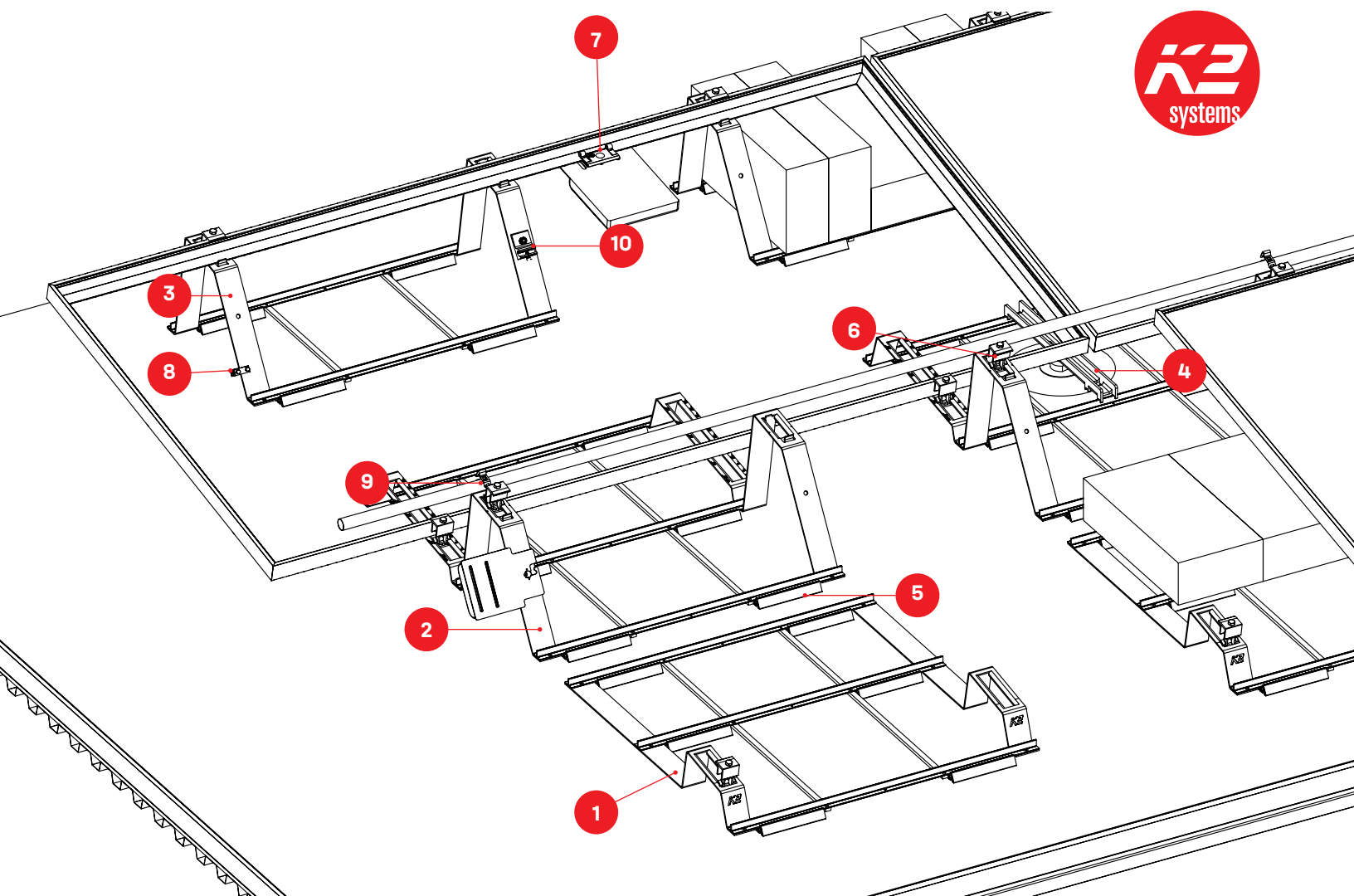
DATA SHEET



PRODUCT FEATURES



- / South facing ballasted system optimized for US market with optional anchoring
- / Mats have built in patented feature that accounts for thermal expansion
- / Sliding, self-aligning clamp allows for adjustable inter-row spacing
- / Array density can be optimized per job
- / Module rests on hook without need for a clamp during installation
- / Stackable for shipping
- / Fast installation with minimal component count result in low total installed cost
- / Can be installed in landscape or portrait orientation



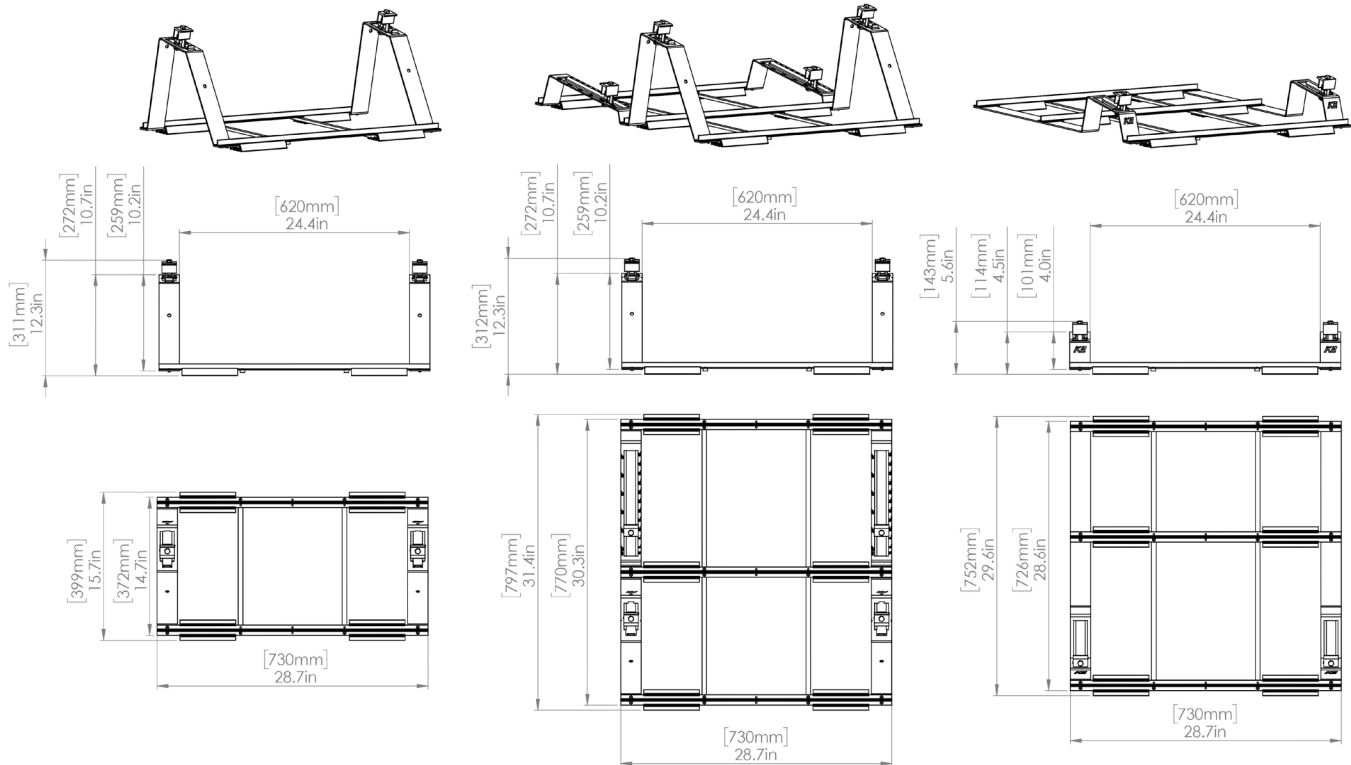
TECHNICAL DATA

Item Number	Description	Part Number
1	South Face Valley	4000158
2	South Face Ridge	4000192
3	South Face Summit	4000159
4	South Face Anchor Bracket	4000194
5	South Face Mat/Spacer Pad	4000193
6	K2 End Clamp Set, Mill/K2 End Clamp Set, Dark	4000197, 4000233
7	MLPE Module Frame Mount	4000083
8	ILSCO Lug	4000960
9	SF, K2 Conduit Clamp, Kit	4000278
10	Everest Ground Lug, 13mm Hex Set	4000006-H

TECHNICAL DATA

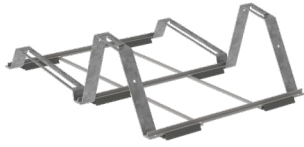


Units: [mm] in



The South Face System	
Roof Type	Flat roof: TPO, Bitumen, EPDM, Concrete
Material	6000 Series Aluminum, Zinc Aluminum Magnesium Coated Structural Steel
Flexibility	Adjustable interrow spacing 8-18"
PV Modules	60 cell, 72 cell, 120 cell, 144 cell
Module Orientation	Portrait (5.5-6.5 degrees) or landscape (10 degrees)
Roof Connection	Ballasted; optional anchors compatible with all major anchors
Structural Validity	IBC and IRC compliant
Maximum allowable uplift force (with anchor)	300kg
Maximum allowable uplift force (without anchor)	Testing TBD
Maximum allowable snow load	See module manufacturer guidelines
Wind Tunnel Testing	Compliant with ASCE 7-16, 7-10 and 7-05, SEAOC PV2
Warranty	25 years

Components



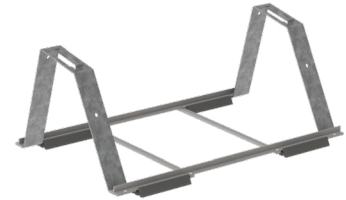
Ridge

Part Number	Description
4000192	South Face Ridge



Valley

Part Number	Description
4000158	South Face Valley



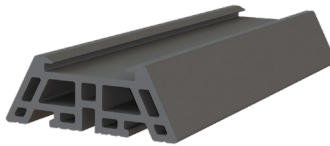
Summit

Part Number	Description
4000159	South Face Summit



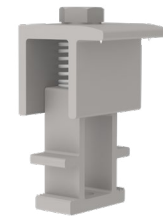
SF Anchor Bracket

Part Number	Description
4000194	South Face Anchor Bracket



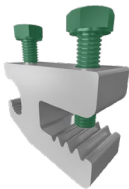
SF Mat/Spacer Pad

Part Number	Description
4000193	South Face Mat/Spacer Pad



K2 End Clamp, Set

Part Number	Description
4000197	K2 End Clamp Set, Mill
4000233	K2 End Clamp Set, Dark



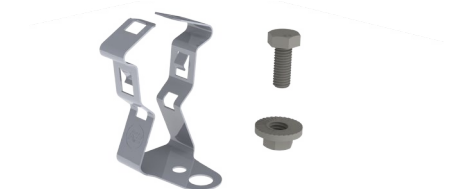
IlSCO Lug

Part Number	Description
4000960	ILSCO, SGB-4



MLPE Module Frame Mount

Part Number	Description
4000083	MLPE Module Frame Mount



SF, K2 Conduit Clamp, Kit

Part Number	Description
4000278	SF, K2 Conduit Clamp, Kit

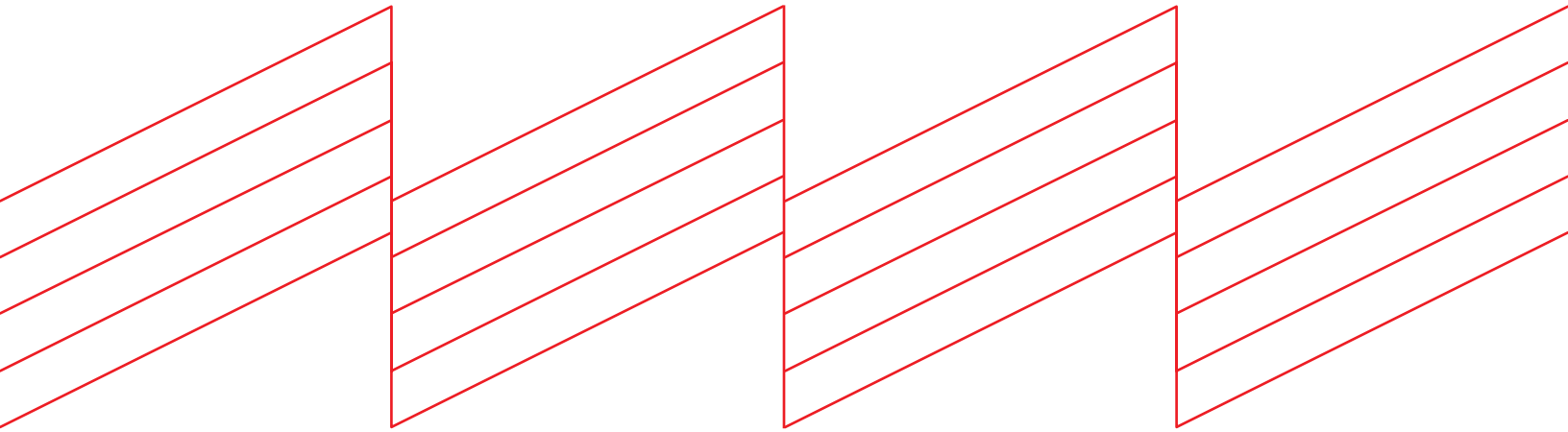


K2 Ground Lug, 13mm Hex Set

Part Number	Description
4000006-H	Everest Ground Lug, 13mm Hex Set



Connecting Strength



K2 Systems, LLC

4665 North Ave. Suite I • Oceanside, CA 92056 •
USA +1.760.301.5300 • infous@k2-systems.com
www.k2-systems.com

The South Face Data Sheet V1 | 0323 • Subject to change
Product illustrations are exemplary and may differ from the original.