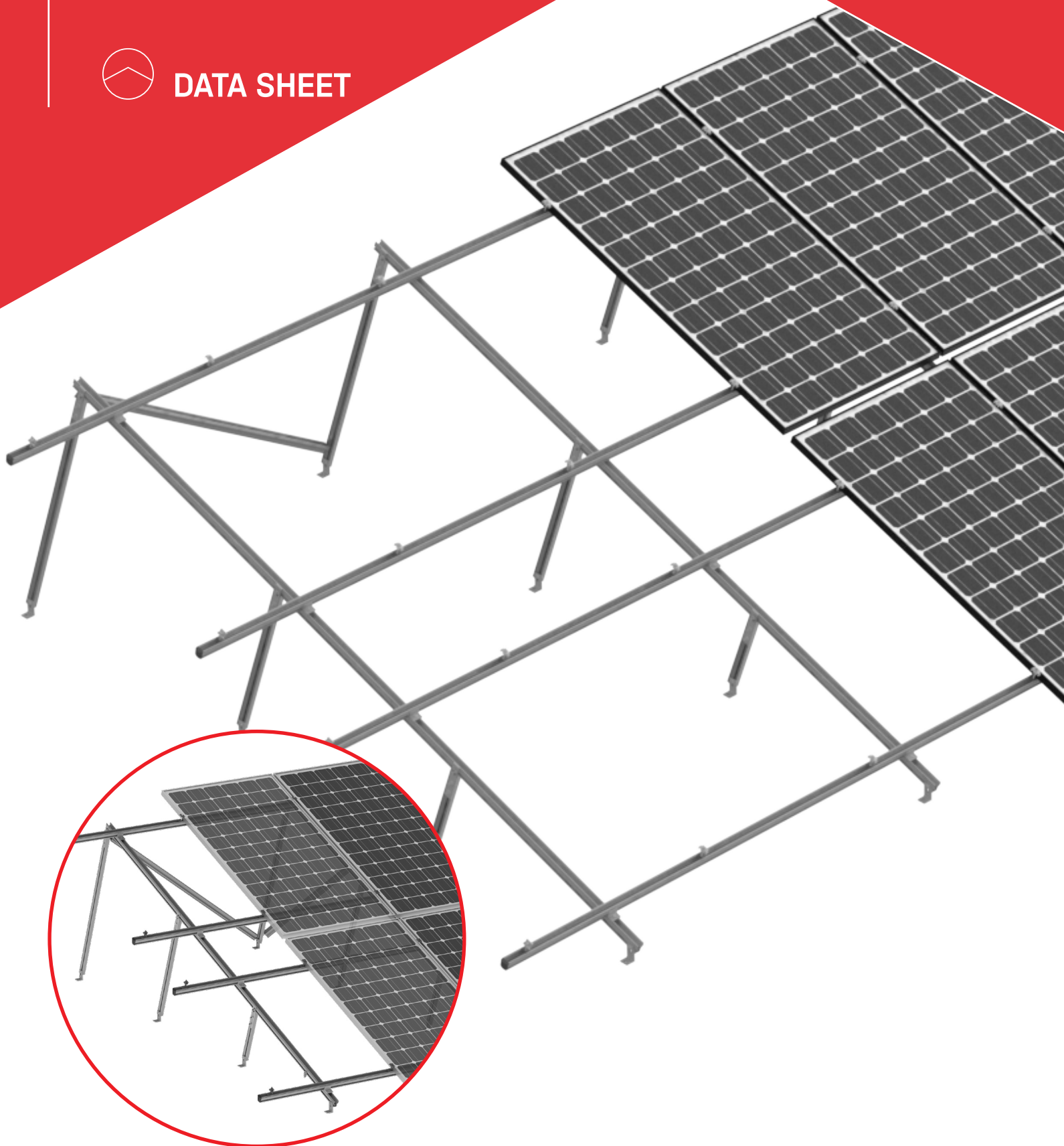


# CrossRail Tilt Up Multi Row System



DATA SHEET



# PRODUCT FEATURES



- / High quality system with global engineering, optimized for residential and commercial installations
- / Inclined system that allows the front leg to be raised up to 50cm
- / The MK4 provides the highest rail engagement
- / Roof attachments for all common roof types
- / Structural validation according to ASCE 7-10
- / Flexible to various tilt angles and pre-engineered for tilts from 7-25 degrees
- / A single rail type for the entire system, including the tilt legs, reducing material waste

# TECHNICAL DATA

	CrossRail Tilt Up System
Roof type	Comp shingle, standing seam, corrugated, trapezoidal, flat roofs
Material	High corrosion resistance stainless steel and high grade aluminum
Finish	Aluminum
Roof Connection	5/16" lag screw
Flexibility	Flexible to various tilt angles and pre-engineered for tilts from 7° to 25°
PV Modules	For all common module types
Module Orientation	Portrait and landscape
System Components	T-Foot, Big Foot, L-Foot, PowerClamps
Structural Validity	ASCE7-10
Certification	UL 2703
Warranty	25 years

# Tilt Up Multi Row Installed Dimensions



The Tilt Up Multi-Row system is a completely customized solution. Figure 1 and Table 1. The following provide recommended installation dimensions based on a standard PV module of 72 cells with clamp locations 1/6 of the module edge dimension. Always make sure that dimensions are suitable for the project site.

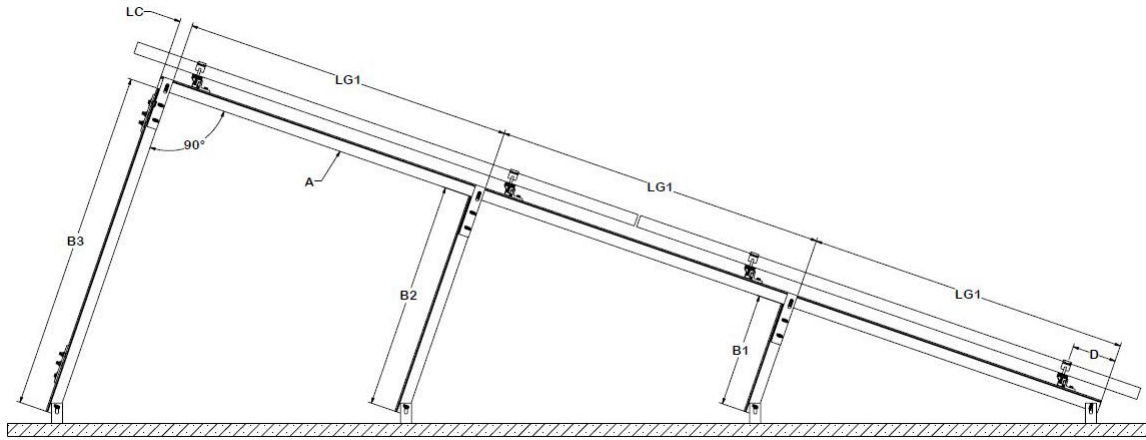


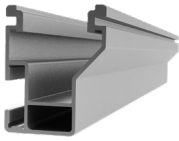
Figure 1: Assembly Dimension Drawing for a 2-Row, Multi-Row Tilt Up System

Note: All dimensions are in meters and feet

Table 1: Installation Dimensions for a 2-Row Tilt Up Multi Row System

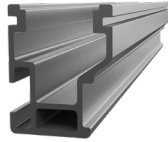
Dimension	Description	Vertical	
		72 Cells	
A	Front Leg N-S	3.76 m	12'4"
B1	Rear Leg 1	0.43 m	1'5"
B2	Rear Leg 2	0.86 m	2'10"
B3	Rear Leg 3	1.04 m	3'5"
D	Front Rail Offset	0.19 m	7"
LC	Rear Rail Offset	0.11 m	4"
LG-1	Rail Spacing	1.17 m	3'10"

# Components



**CrossRail 48-X**

Part Number	Description
4000662	CrossRail 48-X, 166", Mill
4000663	CrossRail 48-X, 166", Dark



**CrossRail 48-XL**

Part Number	Description
4000695	CrossRail 48-XL, 166", Mill
4000705	CrossRail 48-XL, 166", Dark



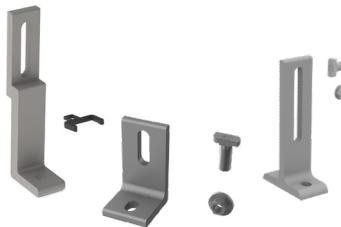
**Tilt Connector Set**

Part Number	Description
4000505	CrossRail Tilt Connector Set



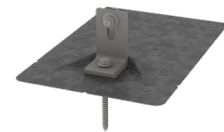
**Climber Set**

Part Number	Description
4006042-H	CR 48-X/48-XL Climber Set w/Hole, 13mm
4006043	CR 44-X, Climber Set w.Hole



**L-Foot Attachments**

Part Number	Description
4000630	L-Foot Slotted Set, Mill
4000631	L-Foot Slotted Set, Dark
4000080	T-Foot X 6" Kit, Mill
4000218	Big Foot 6" w/3" + Chem Link Clip Kit



**K2 Metal Flashings**

Part Number	Description
4000156	K2 Flash Comp Kit, Mill
4000157	K2 Flash Comp Kit, Dark



**Standing Seam PowerClamps**

Part Number	Description
4000016	Standing Seam PowerClamp, Mini, Set
4000017	Standing Seam PowerClamp, Standard, Set



**Trapezoidal Power Clamp, Kit**

Part Number	Description
4000308	Trapezoidal PowerClamp, Kit



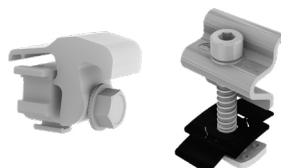
**Corrugated Power Clamp, Kit**

Part Number	Description
4000307	Corrugated PowerClamp, Kit



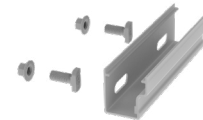
**K2 Mid Clamp**

Part Number	Description
4000601-H	CR MC Silver, 30-47mm, 13mm Hex
4000602-H	CR MC Dark, 30-47mm, 13mm Hex
4000688-H	CR MC Silver, 40-50mm, 13mm Hex
4000689-H	CR MC Dark, 40-50mm, 13mm Hex



**K2 End Clamp**

Part Number	Description
4000050-H	Yeti Hidden EC for CR, 13mm Hex Set
4000090	CR EC Silver, 30-40mm
4000091	CR EC Dark, 30-40mm
4000092	CR EC Silver, 40-47mm
4000093	CR EC Dark, 40-47mm



**CrossRail Rail Connector**

Part Number	Description
4000051	Rail Connector CR 44-X, Set, Mill
4000052	Rail Connector CR 44-X, Set, Dark
4000385	RailConn CR48-X,48-XL Struct Set, Mill
4000386	RailConn CR48-X,48-XL Struct Set, Dark
4001196	Rail Connector UL 2703 Set, CR80, Mill



### Bonding & Grounding

Part Number	Description
4000629-H	CR Microinverter & Opt, 13mm Hex Kit
4000006-H	Everest Ground Lug, 13mm Hex
4000083	MLPE, Module Frame Mount, Kit



### Wire Management

Part Number	Description
4000069	Wire Management Clip, TC
4000382	HEYClip SunRunner Cable Slip SS, S6404
4005394	Wire Mangement Clip, Omega, Black



### CR 48-X/48-XL Sleeve

Part Number	Description
4000583	CrosRail 3" Black Sleeve 48-X, 48-XL

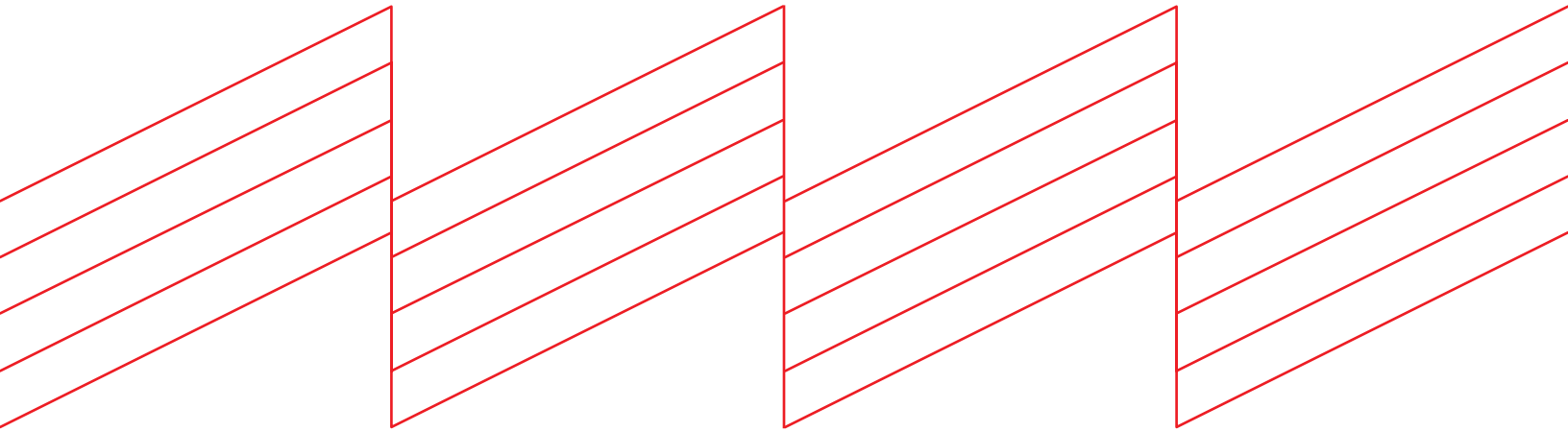


### End Cap

Part Number	Description
4000431	CrossRail Flat EndCap, CR 48-X, 48-XL



# Connecting Strength



## K2 Systems, LLC

4665 North Ave. Suite I • Oceanside, CA 92056 •  
USA +1.760.301.5300 • [infous@k2-systems.com](mailto:infous@k2-systems.com)  
[www.k2-systems.com](http://www.k2-systems.com)