



english version



IRFTS<sup>®</sup>  
SOLAR SOLUTIONS

# EASY ROOF INDUSTRIAL

IN ROOF MOUNTING SYSTEM FOR ROOF WITH PURLINS



PRODUCT



ADVANTAGES

COMPATIBLE  
WITH 60 CELLS - 6"  
MODULES

INDUSTRIAL  
ROOF SOLUTION

CONSTRUCTION  
MADE OF WOOD,  
METAL, CONCRETE

PITCH  
FROM 8° TO 40°

NO CUTS  
NO SEAL

PORTRAIT  
OR  
LANDSCAPE

KNOW  
MORE :



ASSEMBLY  
INSTRUCTION :



**EASY ROOF INDUSTRIAL** is now able to offer a solution to meet the specific characteristics of most types of roofing, Portrait or Landscape found amongst **industrial and agricultural buildings** with fixing on metallic and wooden purlins.

You will be able to integrate **quickly and easily** in Portrait / Landscape style, the great majority of PV panels available on the market thanks to its all- purpose components.

**All components are standard** to help you to face any unforeseeable events on a building site !  
(i.e. : lay-out modification)

Save time and money thanks to its inventive process of splint bar with no cuts and no seals.

CONTACT :  
IRFTS

26, rue du 35<sup>ème</sup>  
Régiment d'Aviation  
69500 BRON  
(FRANCE)

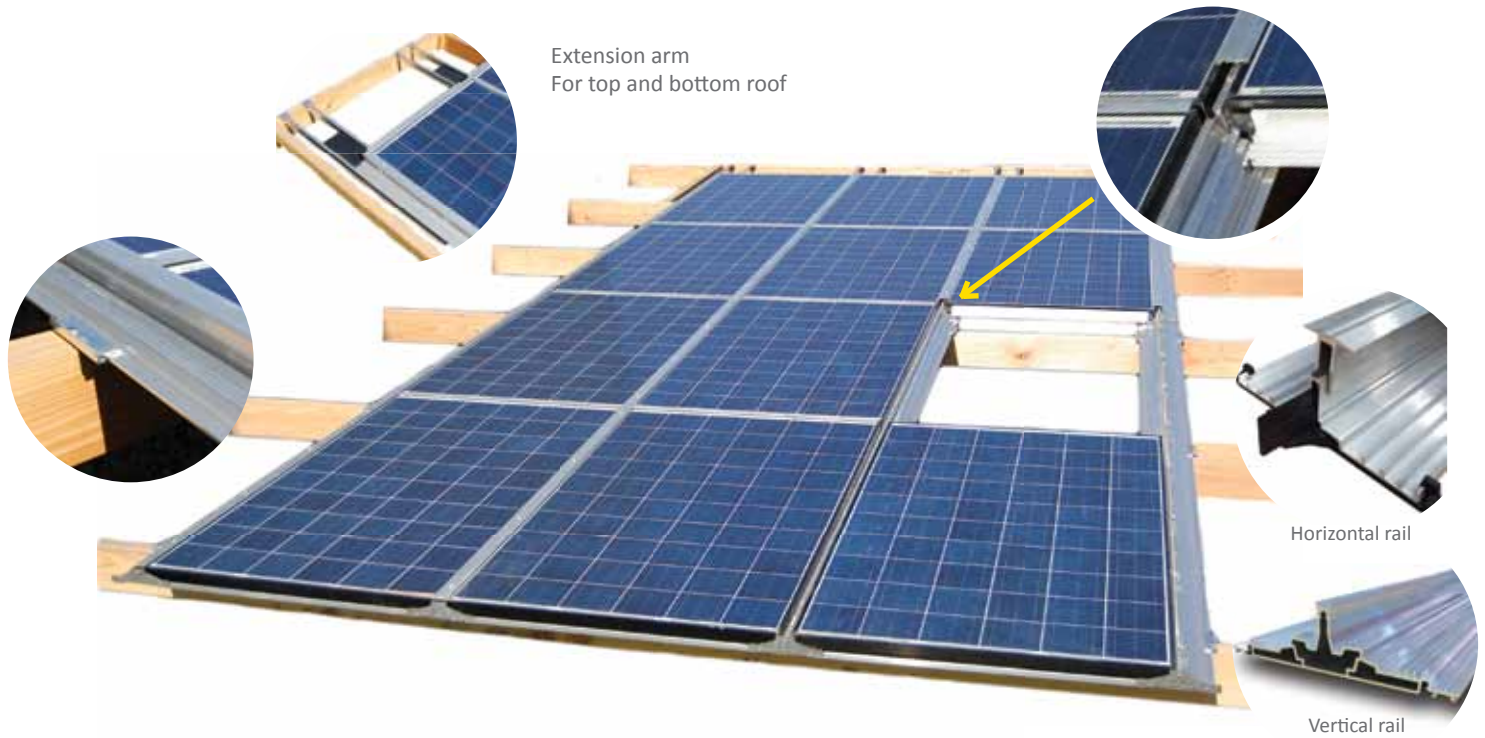
+ 33 (0)4 78 38 83 10

info@irfts.com

[www.irfts.com](http://www.irfts.com)

# EASY ROOF INDUSTRIAL

IN ROOF MOUNTING SYSTEM FOR ROOF WITH PURLINS



## TECHNICAL CHARACTERISTICS AND ADVANTAGES

|                            |   |
|----------------------------|---|
| Versatility                | <ul style="list-style-type: none"> <li>Compatible with all types of roof construction : wood, metal, concrete</li> <li>Maximum distance between purlins: 1.6m</li> <li>Extension arm to reach the next purlin</li> <li>All designs and layouts: Complete or part roof systems, any position on the roof</li> <li>Solution for roofs with slopes between 8 and 40 degrees</li> </ul> |
| Simplicity and time saving | <ul style="list-style-type: none"> <li>Adjustable assembly up to MW without cut on site</li> <li>A clever splint system ease the assembly for a perfect mechanical strength</li> <li>Minimal amounts of parts are required for the assembly of the structure</li> </ul>   |
| Storage/ Distribution      | <ul style="list-style-type: none"> <li>Parts are universal for all size modules and all fields PV configurations</li> </ul>   |
| Reliability                | <ul style="list-style-type: none"> <li>Integrated system with no seals</li> <li>Aluminium fixings and stainless steel fastenings to provide an ultimate resistance to extreme weather conditions</li> </ul>   |
| Design                     | <ul style="list-style-type: none"> <li>Integrated system to provide a seamless and visually stunning installation</li> <li>Available in mill aluminium or black finish</li> </ul>   |
| Performance                | <ul style="list-style-type: none"> <li>Fully ventilated concept to optimise the energy efficiency of the installation</li> </ul>  |
| Tests and standards        | <ul style="list-style-type: none"> <li>1200 joules resistance</li> <li>UV, hailstone, corrosion, heat, snow and wind<br/>(Snow load up to 3800 Pa for max 1000 m altitude)</li> </ul>   |
| Certifications             | <ul style="list-style-type: none"> <li>New Technical Investigation certification (in progress)</li> <li>Pass' Innovation (in progress)</li> <li>10 year manufacturer warranty</li> </ul>  |
| Compatibility              | <ul style="list-style-type: none"> <li>60 cells 6'' framed PV module<sup>(1)</sup></li> </ul>   |
| Formats                    | <ul style="list-style-type: none"> <li>Portrait or Landscape</li> </ul>   |

<sup>(1)</sup> To know more, please consult compatibility document «EASY ROOF INDUSTRIAL» available on : [www.irfts.com](http://www.irfts.com)

MEMBER OF :



Your nearest contact :



[www.irfts.com](http://www.irfts.com)